



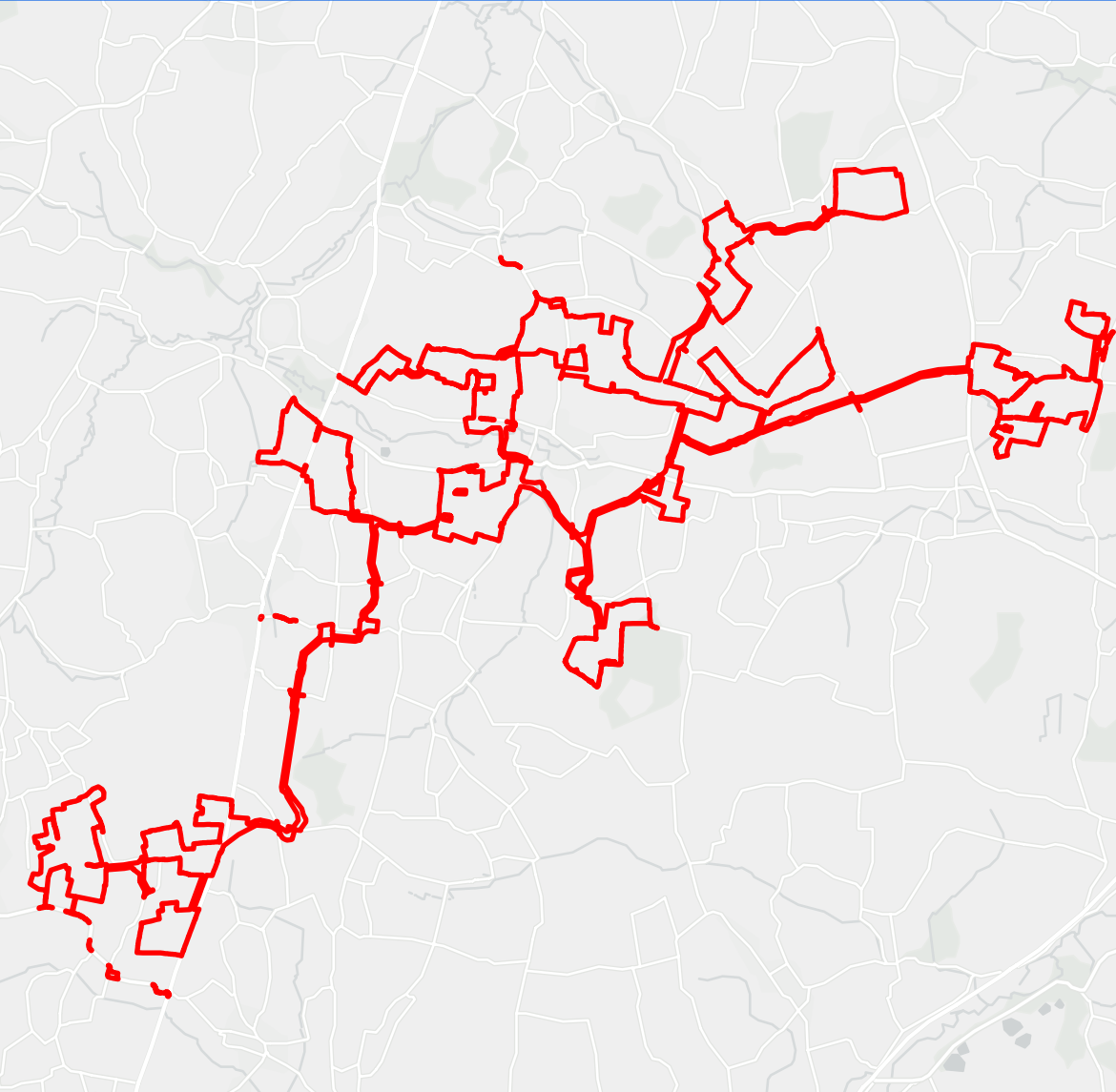
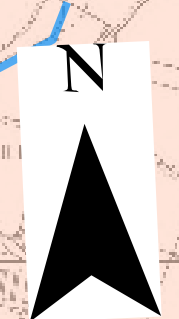
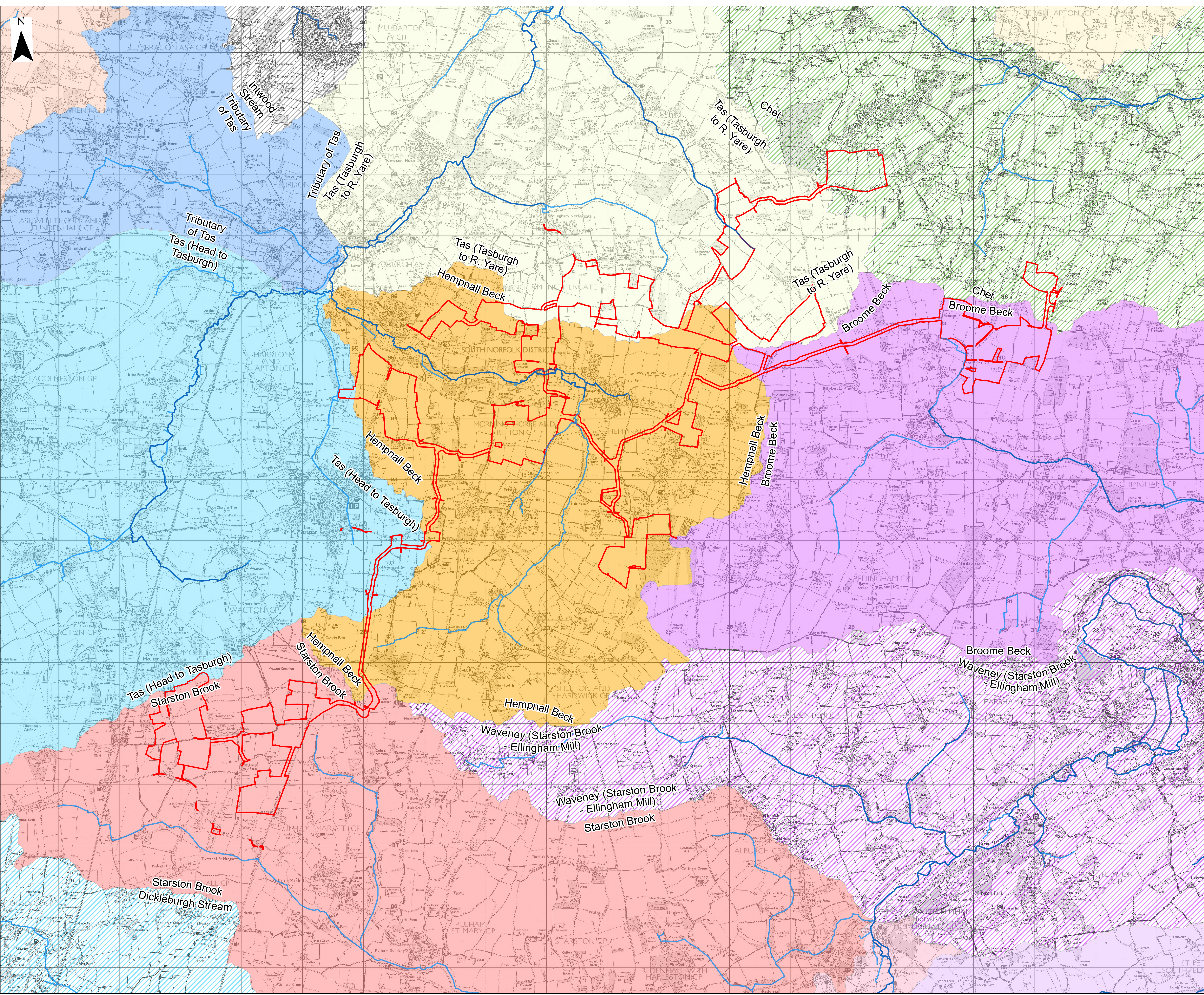
**East Pye Solar
Waterbodies River Basin Management Plan**

**Revision 1
March 2026**

Planning Inspectorate Reference: EN0110014

Document Reference: APP/2.8

APFP Regulation 5(2)(I)



- Key**
- Order Limits
 - Ordinary Watercourse
 - EA Statutory Main River
 - WFD River Water Body Catchments**
 - Broome Beck
 - Hempnall Beck
 - Intwood Stream
 - Starston Brook
 - Tas (Head to Tasburgh)
 - Tas (Tasburgh to R. Yare)
 - The Beck
 - Tiffany (uls Wymondham STW)
 - Tributary of Tas
 - Waveney (R Dove - Starston Brook)
 - Waveney (Starston Brook - Ellingham Mill)
 - Yare (Wensum to tidal)

Layers: Stantec, 2026; IGR, 2026
 Base map: Reproduced from Ordnance Survey digital map data © Crown copyright 2026. All rights reserved. License number: AC000084996
 Contains OS data © Crown Copyright and database right 2026. Contains data from OS Zoomstack

0 2 km
 Scale: 1:20,000@A0

APFP Regulation: 5(2)(l)	Application Doc No: EN0110014APP12.9
Ref: Waterbodies River Basin Management Plan	Date: 3/2/2026
Drawn by: TL/AD	Checked by: AH

Waterbodies River Basin Management Plan
 Sheet 1 of 1
 Revision A